



TIMBER FRAME



APPLICATION

Timber Frame Lintels (TF) are designed for use in timber frame construction and are intended to support the outer leaf of masonry only, generally brickwork.

ALWAYS CHECK LOADINGS AGAINST OUR LOAD-SPAN TABLE

INSTALLATION NOTES

For general installation notes please refer to page 66.

Additional installation requirements for (TF) type lintels

- To avoid excessive deflection and possible twisting, lintels should be secured laterally with restraining clips and should be adequately propped during construction at maximum 1.2 meter centres. Props can be removed after the mortar has cured.
- A tight fitting timber batten (supplied by others) should be placed at mid span to help prevent any lateral deflection.
- Restraining clips to be spaced at maximum 500mm centres, starting from mid span. Clips must be nailed to the timber frame.

ADVANTAGES

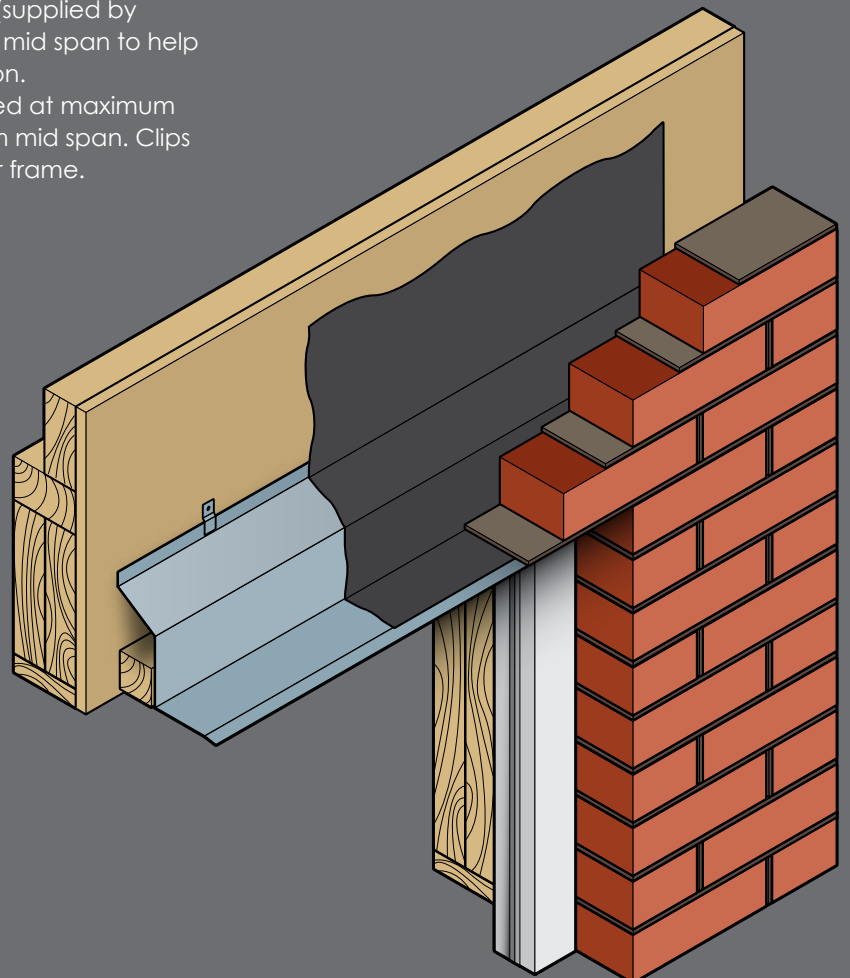
- Easy to install and suitable for a variety of cavity walls
- Can be manufactured to suit Wide Outer Leaf (WOL) or Short Outer Leaf (SOL)
- Galvanised coating ensures durability/longevity
- Supplied with appropriate number of restraining clips

ABBREVIATIONS

UDL – Uniform Distributed Load (Serviceable)
 RM – Resistance Moment (Serviceable)
 SWL – Safe Working Load



If in doubt please contact our technical department on
01455 272457



STANDARD LENGTHS (mm)	600	1350	1950	2250	2550	3150
Lintels are available in increments of 150mm	1200	1800	2100	2400	3000	4800
Nominal Height "h" (mm)	146	157	174	174	220	245
Weights (kg/m)	4.2	6.6	7.0	7.0	8.1	8.7
SWL (kN)	9	9	9	10	11	12
RM (kNm)	2.2	2.2	2.2	2.8	3.9	6.9

See additional installation requirements on page 40.

STANDARD LENGTHS (mm)	600	1950	2400	3150		
Lintels are available in increments of 150mm	1800	2250	3000	4800		
Nominal Height "h" (mm)	174	220	245	280		
Weights (kg/m)	7.0	8.1	8.7	9.5		
SWL (kN)	12	15	15	20		
RM (kNm)	2.4	5.3	5.3	11.6		

See additional installation requirements on page 40.

STANDARD LENGTHS (mm)	600	1350	1950	2250	2550	3150
Lintels are available in increments of 150mm	1200	1800	2100	2400	3000	4800
Nominal Height "h" (mm)	146	157	174	174	220	245
Weights (kg/m)	4.5	7.0	7.4	7.4	8.5	9.1
SWL (kN)	9	9	9	10	11	12
RM (kNm)	2.2	2.2	2.2	2.8	3.9	6.9

See additional installation requirements on page 40.

STANDARD LENGTHS (mm)	600	1950	2400	3150		
Lintels are available in increments of 150mm	1800	2250	3000	4800		
Nominal Height "h" (mm)	174	220	245	280		
Weights (kg/m)	7.0	8.5	9.0	9.9		
SWL (kN)	12	15	15	20		
RM (kNm)	2.4	5.3	5.3	11.6		

See additional installation requirements on page 40.

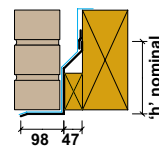
STANDARD LENGTHS (mm)	600	1350	1950	2250	2550	3150
Lintels are available in increments of 150mm	1200	1800	2100	2400	3000	4800
Nominal Height "h" (mm)	146	157	174	174	220	245
Weights (kg/m)	4.8	7.5	7.9	7.9	9.0	9.7
SWL (kN)	9	9	9	10	11	12
RM (kNm)	2.2	2.2	2.2	2.8	3.9	6.9

See additional installation requirements on page 40.

STANDARD LENGTHS (mm)	600	1950	2400	3150		
Lintels are available in increments of 150mm	1800	2250	3000	4800		
Nominal Height "h" (mm)	174	220	245	280		
Weights (kg/m)	7.9	9.0	9.7	10.5		
SWL (kN)	12	15	15	20		
RM (kNm)	2.4	5.3	5.3	11.6		

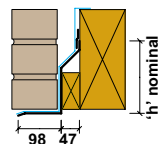
See additional installation requirements on page 40.

SL50 TF



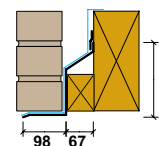
50 - 65mm cavity
102mm outer leaf

SL50 TF HD



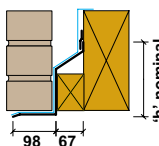
50 - 65mm cavity
102mm outer leaf

SL70 TF



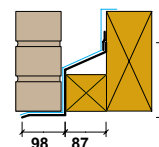
70 - 85mm cavity
102mm outer leaf

SL70 TF HD



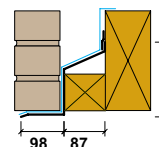
70 - 85mm cavity
102mm outer leaf

SL90 TF



80 - 105mm cavity
102mm outer leaf

SL90 TF HD



80 - 105mm cavity
102mm outer leaf