



INTERNAL SOLID WALL



APPLICATION

Galvanised steel box lintels are designed for use in internal 75mm, 100mm wide or 140-150mm wide, non-load bearing and load bearing walls. Designed to support:

- Concrete floor loads
- Masonry loads, timber floor joists and/or roof trusses
- Attic truss loads
- Point loads: compound trusses, steel beams, etc

ALWAYS CHECK LOADINGS AGAINST OUR LOAD-SPAN TABLE

INSTALLATION NOTES

For general installation notes please refer to page 66.

ADVANTAGES

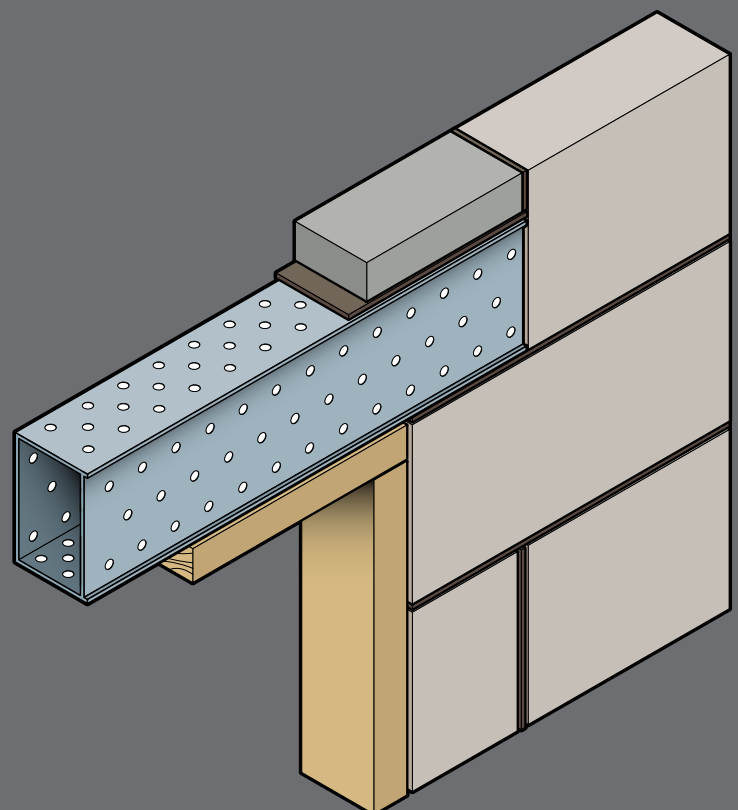
- Easy to install
- Suitable for 75mm, 100mm wide or 140-150mm wide walls
- Can be supplied insulated for use at eaves level at additional cost
- Galvanised coating ensures durability/longevity
- Built-in plaster key – perforated plate to base and two sides
- Suitable for use under various loading conditions

ABBREVIATIONS

UDL – Uniform Distributed Load (Serviceable)
RM – Resistance Moment (Serviceable)
SWL – Safe Working Load



If in doubt please contact our technical department on
01455 272457



STANDARD LENGTHS (mm)	600	1650					
Lintels are available in increments of 150mm	1500	1800					
Nominal Height "h" (mm)	80	80					
Weights (kg/m)	5.3	5.3					
SWL (kN)	16	11					
RM (kNm)	2.7	2.7					

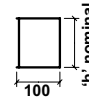
SL75 BOX



Light Duty

STANDARD LENGTHS (mm)	600	1650	2250	2550	2850	3750	4350	4900
Lintels are available in increments of 150mm	1500	2100	2400	2700	3600	4200	4800	5100
Nominal Height "h" (mm)	108	150	150	150	225	225	225	225
Weights (kg/m)	6.9	8.3	8.3	8.3	15.9	15.9	15.9	15.9
SWL (kN)	24	30	28	24	35	30	29	27
RM (kNm)	4.1	7.8	7.8	7.8	15.5	15.5	15.5	15.5

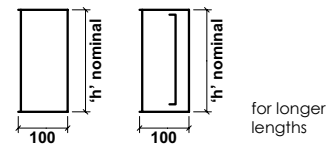
SL100 BOX



Standard Duty

STANDARD LENGTHS (mm)	600	1350	1650	2550	2850	3750	
Lintels are available in increments of 150mm	1200	1500	2400	2700	3600	4800	
Nominal Height "h" (mm)	150	150	225	225	225	225	
Weights (kg/m)	8.3	15.9	15.9	15.9	19.9	19.9	
SWL (kN)	51	46	55	49	55	40	
RM (kNm)	7.8	15.5	15.5	15.5	23.3	23.3	

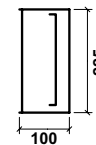
SL100 BOX HD



Heavy Duty

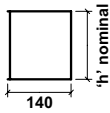
STANDARD LENGTHS (mm)	600						
Lintels are available in increments of 150mm	2700						
Nominal Height "h" (mm)	225						
Weights (kg/m)	19.9						
SWL (kN)	70						
RM (kNm)	23.3						

SL100 BOX XHD



Extra Heavy Duty

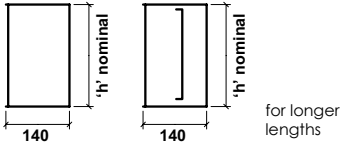
SL140 BOX



Standard Duty

STANDARD LENGTHS (mm)	600	1650	2250	2550	2850	4350		
Lintels are available in increments of 150mm	1500	2100	2400	2700	4200	5100		
Nominal Height "h" (mm)	150	150	150	150	225	225		
Weights (kg/m)	9.7	9.7	9.7	9.7	18.0	18.0		
SWL (kN)	50	35	30	26	46	42		
RM (kNm)	8.6	8.6	8.6	8.6	17.2	17.2		

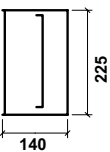
SL140 BOX HD



Heavy Duty

STANDARD LENGTHS (mm)	600	1650	1950	2850	3750			
Lintels are available in increments of 150mm	1500	1800	2700	3600	4800			
Nominal Height "h" (mm)	150	225	225	225	225			
Weights (kg/m)	14.5	18.0	18.0	22.0	22.0			
SWL (kN)	60	60	54	55	43			
RM (kNm)	10.1	17.2	17.2	25.0	25.0			

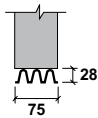
SL140 BOX XHD



Extra Heavy Duty

STANDARD LENGTHS (mm)	600							
Lintels are available in increments of 150mm	2700							
Nominal Height "h" (mm)	225							
Weights (kg/m)	22.0							
SWL (kN)	75							
RM (kNm)	25.0							

SL75 INT

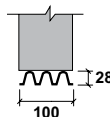


Light Duty

STANDARD LENGTHS (mm)	900	1050	1200					
Lintels are available in increments of 150mm								
Nominal Height "h" (mm)	28	28	28					
Weights (kg/m)	1.1	1.1	1.1					
SWL (kN) with 225mm coursing	5	7	7					

NOTE: SL100 INT and SL75 INT loadings are achieved with the composite action of one course of blockwork built on top. The mortar MUST be allowed to harden for at least 24 hours before applying any additional loads.

SL100 INT



Light Duty

STANDARD LENGTHS (mm)	900	1050	1200					
Lintels are available in increments of 150mm								
Nominal Height "h" (mm)	28	28	28					
Weights (kg/m)	1.2	1.2	1.2					
SWL (kN) with 150mm coursing	5	5	5					
SWL (kN) with 225mm coursing	7	7	7					