



# CAVITY WALL SHORT OUTER LEAF (SOL)



## APPLICATION

These lintels are suitable to support a 75mm outer leaf of cant brick or 100mm wide decorative head detail. Lintels are available in all profiles for a variety of cavity wall constructions from 50mm to 150mm; please ask our sales office for availability and prices for specific applications.

### Standard (SOL) and Heavy Duty (HD SOL & HDX SOL)

These lintels are designed to support:

- Masonry loads
- Masonry loads and uniformly distributed timber floor loads
- Uniformly distributed roof loads (in most cases HD lintel type is required)

### Extra Heavy Duty (XHD SOL) and Composite Extra Heavy Duty (CXHD SOL)

These lintels are designed to support:

- Concrete floor loads
- Attic truss loads
- Point loads: compound trusses, steel beams, etc.

ALWAYS CHECK LOADINGS AGAINST OUR LOAD-SPAN TABLE

## INSTALLATION NOTES

For general installation notes please refer to page 66.

### Additional installation requirements for Composite Extra Heavy Duty (CXHD SOL)

- Ensure that the inner leaf channel is filled with well cured masonry before work proceeds over. Masonry needs to be built tightly against the vertical section of the channel and a mortar joint added to the top of masonry, so that the loads from units above are spread evenly over the inner flange of the lintel.
- Composite lintels should be adequately propped during construction, at maximum 1.2 metre centres. Props should not be removed until the mortar has cured.

## ADVANTAGES:

- Easy to install
- Galvanised coating ensures durability/longevity
- Built-in plaster key – perforated base plate to inner flange
- Excellent thermal efficiency
- Built-in continuous insulation

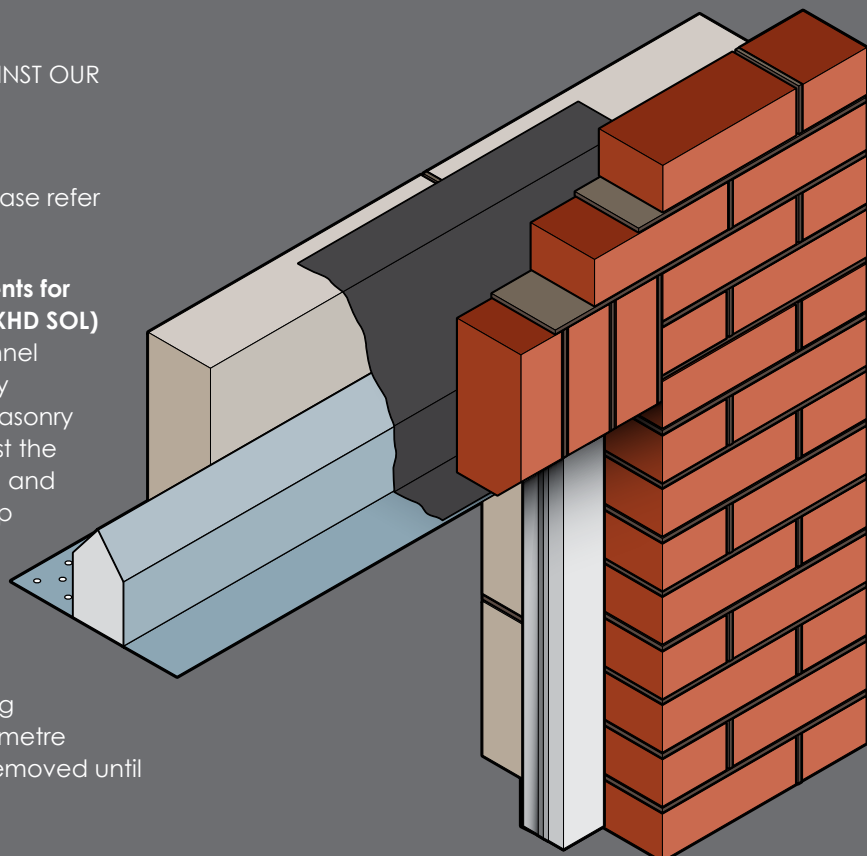
## ABBREVIATIONS

UDL – Uniform Distributed Load (Serviceable)  
 RM – Resistance Moment (Serviceable)  
 SWL – Safe Working Load



If in doubt please contact our technical department on

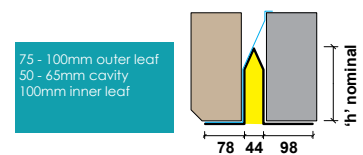
01455 272457



SHORT OUTER LEAF (SOL)

STANDARD LENGTHS (mm) Lintels are available in increments of 150mm	600 1200	1350 1500	1650 1800	1950 2100	2250 2400	2550 3000	3150 3600	3750 3900	4050 4200	4350 4800
Nominal Height "h" (mm)	95	113	134	140	153	190	190	190	225	225
Weights (kg/m)	8.8	9.6	10.6	10.9	11.5	13.3	13.3	13.3	15.0	17.3
SWL 1:1/3:1 (kN)	16	17	22	23	24	28	28	28	28	28
SWL 19:1 (kN)	12	13	17	18	19	22	22	22	22	22
RM (kNm)	3.5	4.5	6.4	7.7	8.8	13.3	13.3	13.3	13.3	13.3

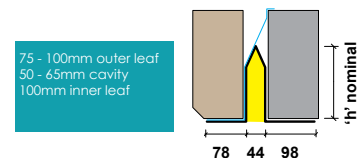
## SL50 SOL



Not suitable to support precast concrete floors, attic trusses, heavy point loads.

STANDARD LENGTHS (mm) Lintels are available in increments of 150mm	600 1200	1350 1500	1650 2100	2250 2700	2850 3150	3300 3600	3750 3900	4050 4200
Nominal Height "h" (mm)	140	153	190	190	225	225	225	225
Weights (kg/m)	10.9	11.5	13.3	13.3	15.0	15.0	15.0	17.3
SWL 1:1/3:1 (kN)	42	40	41	41	41	35	33	33
SWL 19:1 (kN)	33	31	32	32	32	27	26	26
RM (kNm)	7.7	8.8	13.3	15.5	7.7	8.8	13.3	15.5

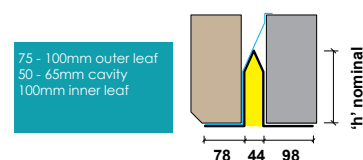
## SL50 HD SOL



Not suitable to support precast concrete floors, attic trusses, heavy point loads.

STANDARD LENGTHS (mm) Lintels are available in increments of 150mm	600 1200	1350 1500	1650 1800	1950 2250	2400 2700			
Nominal Height "h" (mm)	153	185	190	225	225			
Weights (kg/m)	11.5	13.0	13.3	15.0	17.3			
SWL 1:1/3:1 (kN)	51	53	64	59	50			
SWL 19:1 (kN)	40	41	50	46	39			
RM (kNm)	6.8	9.0	13.3	15.5	16.2			

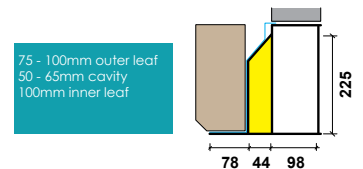
## SL50 HDX SOL



Not suitable to support precast concrete floors, attic trusses, heavy point loads.

STANDARD LENGTHS (mm) Lintels are available in increments of 150mm	600 2100	2250 2700	2850 3300	3450 3900	4050 4200			
Nominal Height "h" (mm)	225	225	225	225	225			
Weights (kg/m)	25.2	25.2	25.2	25.2	25.2			
SWL 5:1 (kN)	79	60	49	41	40			
SWL 19:1 (kN)	66	51	41	34	33			
RM (kNm)	20.6	20.6	20.6	20.6	20.6			

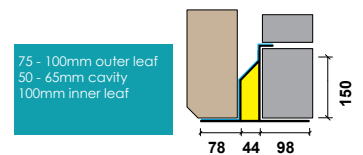
## SL50 XHD 225 SOL



Suitable to support precast concrete floors, attic trusses, and point loads.

STANDARD LENGTHS (mm) Lintels are available in increments of 150mm	600 1800	1950 2100	2250 2400	2550 2700				
Nominal Height "h" (mm)	156	156	156	156				
Weights (kg/m)	14.3	14.3	14.3	14.3				
SWL 5:1 (kN)	72	62	53	41				
SWL 19:1 (kN)	61	52	45	34				
RM (kNm)	12.6	12.6	12.6	12.6				

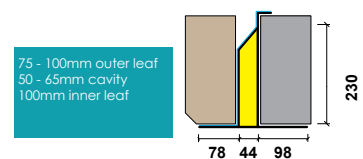
## SL50 CXHD 150 SOL



Suitable to support precast concrete floors, attic trusses, and point loads.

STANDARD LENGTHS (mm) Lintels are available in increments of 150mm	600 1800	1950 3000	3150 3900	4050 4500	4650 4800	4950 5100		
Nominal Height "h" (mm)	236	236	236	236	236	236		
Weights (kg/m)	28.1	28.1	28.1	28.1	28.1	18.1		
SWL 5:1 (kN)	89	71	55	42	37	32		
SWL 19:1 (kN)	75	60	46	40	35	30		
RM (kNm)	21.5	21.5	21.5	20.5	20.5	20.5		

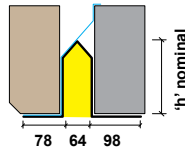
## SL50 CXHD 225 SOL



Suitable to support precast concrete floors, attic trusses, and point loads.

## SL70 SOL

75 - 100mm outer leaf  
70 - 85mm cavity  
100mm inner leaf

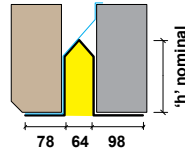


Not suitable to support precast concrete floors, attic trusses, heavy point loads.

STANDARD LENGTHS (mm)	600	1350	1650	1950	2250	2550	3150	3750	4050	4350
Lintels are available in increments of 150mm	1200	1500	1800	2100	2400	3000	3600	3900	4200	4800
Nominal Height "h" (mm)	95	113	134	140	153	190	190	190	225	225
Weights (kg/m)	9.3	10.2	11.2	11.5	12.1	13.8	13.8	13.8	15.2	18.0
SWL 1:1/3:1 (kN)	16	17	22	23	24	28	28	28	28	28
SWL 19:1 (kN)	12	13	17	18	19	22	22	22	22	22
RM (kNm)	3.5	4.5	6.4	7.7	8.8	13.3	13.3	13.3	13.3	13.3

## SL70 HD SOL

75 - 100mm outer leaf  
70 - 85mm cavity  
100mm inner leaf

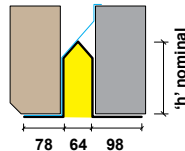


Not suitable to support precast concrete floors, attic trusses, heavy point loads.

STANDARD LENGTHS (mm)	600	1350	1650	2250	2850	3300	3750	4050
Lintels are available in increments of 150mm	1200	1500	2100	2700	3150	3600	3900	4200
Nominal Height "h" (mm)	140	153	190	190	225	225	225	225
Weights (kg/m)	11.1	11.8	13.5	13.5	15.2	15.2	15.2	18.0
SWL 1:1/3:1 (kN)	42	40	41	41	41	35	33	33
SWL 19:1 (kN)	33	31	32	32	32	27	26	26
RM (kNm)	5.6	6.8	10.0	13.3	15.5	15.5	15.5	16.2

## SL70 HDX SOL

75 - 100mm outer leaf  
70 - 85mm cavity  
100mm inner leaf

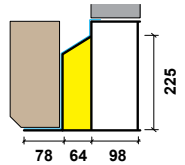


Not suitable to support precast concrete floors, attic trusses, heavy point loads.

STANDARD LENGTHS (mm)	600	1350	1650	1950	2400			
Lintels are available in increments of 150mm	1200	1500	1800	2250	2700			
Nominal Height "h" (mm)	153	185	190	225	225			
Weights (kg/m)	11.8	13.3	13.5	15.2	18.0			
SWL 1:1/3:1 (kN)	51	53	64	59	50			
SWL 19:1 (kN)	40	41	50	46	39			
RM (kNm)	6.8	9.0	13.3	15.5	16.2			

## SL70 XHD 225 SOL

75 - 100mm outer leaf  
70 - 85mm cavity  
100mm inner leaf

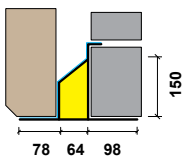


Suitable to support precast concrete floors, attic trusses, and point loads.

STANDARD LENGTHS (mm)	600	2250	2850	3450	4050			
Lintels are available in increments of 150mm	2100	2700	3300	3900	4200			
Nominal Height "h" (mm)	225	225	225	225	225			
Weights (kg/m)	26.0	26.0	26.0	26.0	25.2			
SWL 5:1 (kN)	79	60	49	41	40			
SWL 19:1 (kN)	66	51	41	34	33			
RM (kNm)	20.6	20.6	20.6	20.6	20.6			

## SL70 CXHD 150 SOL

75 - 100mm outer leaf  
70 - 85mm cavity  
100mm inner leaf

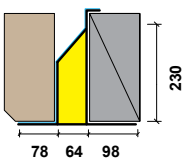


Suitable to support precast concrete floors, attic trusses, and point loads.

STANDARD LENGTHS (mm)	600	1950	2250	2550				
Lintels are available in increments of 150mm	1800	2100	2400	2700				
Nominal Height "h" (mm)	156	156	156	156				
Weights (kg/m)	15.2	15.2	15.2	14.3				
SWL 5:1 (kN)	72	62	53	41				
SWL 19:1 (kN)	61	52	45	34				
RM (kNm)	12.6	12.6	12.6	12.6				

## SL70 CXHD 225 SOL

75 - 100mm outer leaf  
70 - 85mm cavity  
100mm inner leaf



Suitable to support precast concrete floors, attic trusses, and point loads.

STANDARD LENGTHS (mm)	600	1950	3150	4050	4650	4950		
Lintels are available in increments of 150mm	1800	3000	3900	4500	4800	5100		
Nominal Height "h" (mm)	236	236	236	236	236	236		
Weights (kg/m)	18.9	18.9	18.9	18.9	18.9	18.1		
SWL 5:1 (kN)	89	71	55	42	37	32		
SWL 19:1 (kN)	75	60	46	40	35	30		
RM (kNm)	21.5	21.5	21.5	20.5	20.5	20.5		

STANDARD LENGTHS (mm) Lintels are available in increments of 150mm	600 1200	1350 1500	1650 1800	1950 2100	2250 2400	2550 3000	3150 3600	3750 3900	4050 4200	4350 4800
Nominal Height "h" (mm)	95	113	134	140	153	190	190	190	225	225
Weights (kg/m)	9.7	10.6	11.6	11.9	12.5	14.3	14.3	14.3	15.5	18.8
SWL 1:1/3:1 (kN)	16	17	22	23	24	28	28	28	28	28
SWL 19:1 (kN)	12	13	17	18	19	22	22	22	22	22
RM (kNm)	3.5	4.5	6.4	7.7	8.8	13.3	13.3	13.3	13.3	13.3

STANDARD LENGTHS (mm) Lintels are available in increments of 150mm	600 1200	1350 1500	1650 2100	2250 2700	2850 3150	3300 3600	3750 3900	4050 4200
Nominal Height "h" (mm)	140	153	190	190	225	225	225	225
Weights (kg/m)	11.9	12.1	13.8	13.8	15.5	15.5	15.5	18.8
SWL 1:1/3:1 (kN)	42	40	41	41	41	35	33	33
SWL 19:1 (kN)	33	31	32	32	32	27	26	26
RM (kNm)	5.6	6.8	10.0	13.3	15.5	15.5	15.5	16.2

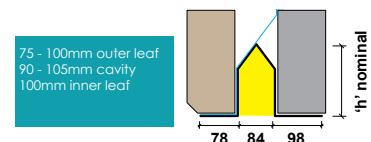
STANDARD LENGTHS (mm) Lintels are available in increments of 150mm	600 1200	1350 1500	1650 1800	1950 2250	2400 2700			
Nominal Height "h" (mm)	153	185	190	225	225			
Weights (kg/m)	12.5	14.0	14.3	15.5	18.8			
SWL 1:1/3:1 (kN)	51	53	64	59	50			
SWL 19:1 (kN)	40	41	50	46	39			
RM (kNm)	6.8	9.0	13.3	15.5	16.2			

STANDARD LENGTHS (mm) Lintels are available in increments of 150mm	600 2100	2250 2700	2850 3300	3450 3900	4050 4200			
Nominal Height "h" (mm)	225	225	225	225	225			
Weights (kg/m)	26.9	26.9	26.9	26.9	25.2			
SWL 5:1 (kN)	79	60	49	41	40			
SWL 19:1 (kN)	66	51	41	34	33			
RM (kNm)	20.6	20.6	20.6	20.6	20.6			

STANDARD LENGTHS (mm) Lintels are available in increments of 150mm	600 1800	1950 2100	2250 2400	2550 2700				
Nominal Height "h" (mm)	156	156	156	156				
Weights (kg/m)	16.0	16.0	16.0	14.3				
SWL 5:1 (kN)	72	62	53	41				
SWL 19:1 (kN)	61	52	45	34				
RM (kNm)	12.6	12.6	12.6	12.6				

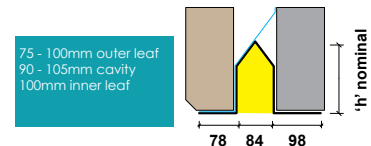
STANDARD LENGTHS (mm) Lintels are available in increments of 150mm	600 1800	1950 3000	3150 3900	4050 4500	4650 4800	4950 5100		
Nominal Height "h" (mm)	236	236	236	236	236	236		
Weights (kg/m)	19.8	19.8	19.8	19.8	19.8	18.1		
SWL 5:1 (kN)	89	71	55	42	37	32		
SWL 19:1 (kN)	75	60	46	40	35	30		
RM (kNm)	21.5	21.5	21.5	20.5	20.5	20.5		

## SL90 SOL



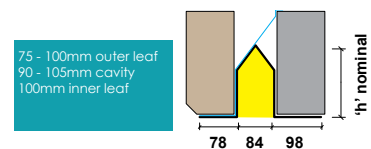
Not suitable to support precast concrete floors, attic trusses, heavy point loads.

## SL90 HD SOL



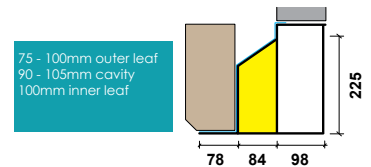
Not suitable to support precast concrete floors, attic trusses, heavy point loads.

## SL90 HDX SOL



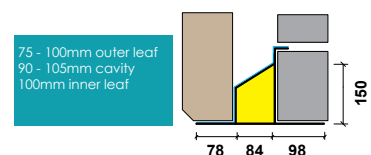
Not suitable to support precast concrete floors, attic trusses, heavy point loads.

## SL90 XHD 225 SOL



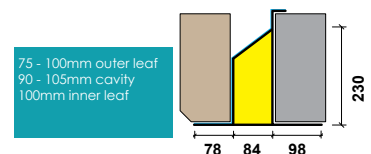
Suitable to support precast concrete floors, attic trusses, and point loads.

## SL90 CXHD 150 SOL



Suitable to support precast concrete floors, attic trusses, and point loads.

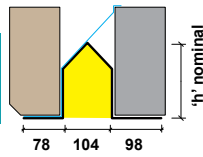
## SL90 CXHD 225 SOL



Suitable to support precast concrete floors, attic trusses, and point loads.

### SL110 SOL

75 - 100mm outer leaf  
110 - 125mm cavity  
100mm inner leaf

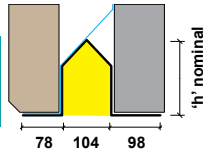


Not suitable to support precast concrete floors, attic trusses, heavy point loads.

STANDARD LENGTHS (mm)	600	1350	1650	1950	2250	2550	3150	3750	4050	4350
Lintels are available in increments of 150mm	1200	1500	1800	2100	2400	3000	3600	3900	4200	4800
Nominal Height "h" (mm)	95	113	134	140	153	190	190	190	225	225
Weights (kg/m)	10.1	11.0	12.0	12.3	12.9	14.6	14.6	14.6	16.3	20.1
SWL 1:1/3:1 (kN)	16	17	22	23	24	28	28	28	28	28
SWL 19:1 (kN)	12	13	17	18	19	22	22	22	22	22
RM (kNm)	3.5	4.5	6.4	7.7	8.8	13.3	13.3	13.3	13.3	13.3

### SL110 HD SOL

75 - 100mm outer leaf  
110 - 125mm cavity  
100mm inner leaf

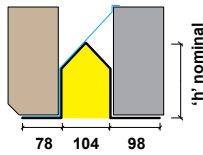


Not suitable to support precast concrete floors, attic trusses, heavy point loads.

STANDARD LENGTHS (mm)	600	1350	1650	2250	2850	3300	3750	4050
Lintels are available in increments of 150mm	1200	1500	2100	2700	3150	3600	3900	4200
Nominal Height "h" (mm)	140	153	190	190	225	225	225	225
Weights (kg/m)	12.3	12.9	14.6	14.6	16.3	16.3	16.3	20.1
SWL 1:1/3:1 (kN)	42	40	41	41	41	35	33	33
SWL 19:1 (kN)	33	31	32	32	32	27	26	26
RM (kNm)	5.6	6.8	10.0	13.3	15.5	15.5	15.5	16.2

### SL110 HDX SOL

75 - 100mm outer leaf  
110 - 125mm cavity  
100mm inner leaf

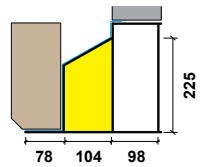


Not suitable to support precast concrete floors, attic trusses, heavy point loads.

STANDARD LENGTHS (mm)	600	1350	1650	1950	2400			
Lintels are available in increments of 150mm	1200	1500	1800	2250	2700			
Nominal Height "h" (mm)	153	185	190	225	225			
Weights (kg/m)	12.9	14.4	14.6	16.3	20.1			
SWL 1:1/3:1 (kN)	51	53	64	59	50			
SWL 19:1 (kN)	40	41	50	46	39			
RM (kNm)	6.8	9.0	13.3	15.5	16.2			

### SL110 XHD 225 SOL

75 - 100mm outer leaf  
110 - 125mm cavity  
100mm inner leaf

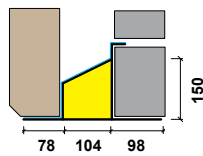


Suitable to support precast concrete floors, attic trusses, and point loads.

STANDARD LENGTHS (mm)	600	2250	2850	3450	4050			
Lintels are available in increments of 150mm	2100	2700	3300	3900	4200			
Nominal Height "h" (mm)	225	225	225	225	225			
Weights (kg/m)	27.8	27.8	27.8	27.8	25.2			
SWL 5:1 (kN)	79	60	49	41	40			
SWL 19:1 (kN)	66	51	41	34	33			
RM (kNm)	20.6	20.6	20.6	20.6	20.6			

### SL110 CXHD 150 SOL

75 - 100mm outer leaf  
110 - 125mm cavity  
100mm inner leaf

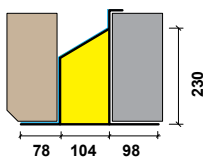


Suitable to support precast concrete floors, attic trusses, and point loads.

STANDARD LENGTHS (mm)	600	1950	2250	2550				
Lintels are available in increments of 150mm	1800	2100	2400	2700				
Nominal Height "h" (mm)	156	156	156	156				
Weights (kg/m)	16.9	16.9	16.9	14.3				
SWL 5:1 (kN)	72	62	53	41				
SWL 19:1 (kN)	61	52	45	34				
RM (kNm)	12.6	12.6	12.6	12.6				

### SL110 CXHD 225 SOL

75 - 100mm outer leaf  
110 - 125mm cavity  
100mm inner leaf



Suitable to support precast concrete floors, attic trusses, and point loads.

STANDARD LENGTHS (mm)	600	1950	3150	4050	4650	4950		
Lintels are available in increments of 150mm	1800	3000	3900	4500	4800	5100		
Nominal Height "h" (mm)	236	236	236	236	236	236		
Weights (kg/m)	20.7	20.7	20.7	20.7	20.7	18.1		
SWL 5:1 (kN)	89	71	55	42	37	32		
SWL 19:1 (kN)	75	60	46	40	35	30		
RM (kNm)	21.5	21.5	21.5	20.5	20.5	20.5		

STANDARD LENGTHS (mm) Lintels are available in increments of 150mm	600 1200	1350 1500	1650 1800	1950 2100	2250 2400	2550 3000	3150 3600	3750 3900	4050 4200	4350 4800
Nominal Height "h" (mm)	95	113	134	140	153	190	190	190	225	225
Weights (kg/m)	10.4	11.3	12.3	12.6	13.2	15.0	15.0	15.0	16.7	20.9
SWL 1:1/3:1 (kN)	16	17	22	23	24	28	28	28	28	28
SWL 19:1 (kN)	12	13	17	18	19	22	22	22	22	22
RM (kNm)	3.5	4.5	6.4	7.7	8.8	13.3	13.3	13.3	13.3	13.3

STANDARD LENGTHS (mm) Lintels are available in increments of 150mm	600 2100	1350 1500	1650 2100	2250 2700	2850 3150	3300 3600	3750 3900	4050 4200
Nominal Height "h" (mm)	140	153	190	190	225	225	225	225
Weights (kg/m)	12.6	13.2	15.0	15.0	16.7	16.7	16.7	20.9
SWL 1:1/3:1 (kN)	42	40	41	41	41	35	33	33
SWL 19:1 (kN)	33	31	32	32	32	27	26	26
RM (kNm)	5.6	6.8	10.0	13.3	15.5	15.5	15.5	16.2

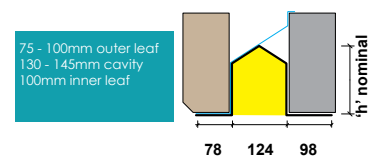
STANDARD LENGTHS (mm) Lintels are available in increments of 150mm	600 1200	1350 1500	1650 1800	1950 2250	2400 2700			
Nominal Height "h" (mm)	153	185	190	225	225			
Weights (kg/m)	13.2	14.7	15.0	16.7	20.9			
SWL 1:1/3:1 (kN)	51	53	64	59	50			
SWL 19:1 (kN)	40	41	50	46	39			
RM (kNm)	6.8	9.0	13.3	15.5	16.2			

STANDARD LENGTHS (mm) Lintels are available in increments of 150mm	600 2100	2250 2700	2850 3300	3450 3900	4050 4200			
Nominal Height "h" (mm)	225	225	225	225	225			
Weights (kg/m)	28.7	28.7	28.7	28.7	25.2			
SWL 5:1 (kN)	79	60	49	41	40			
SWL 19:1 (kN)	66	51	41	34	33			
RM (kNm)	20.6	20.6	20.6	20.6	20.6			

STANDARD LENGTHS (mm) Lintels are available in increments of 150mm	600 1800	1950 2100	2250 2400	2550 2700				
Nominal Height "h" (mm)	156	156	156	156				
Weights (kg/m)	17.8	17.8	17.8	14.3				
SWL 5:1 (kN)	72	62	53	41				
SWL 19:1 (kN)	61	52	45	34				
RM (kNm)	12.6	12.6	12.6	12.6				

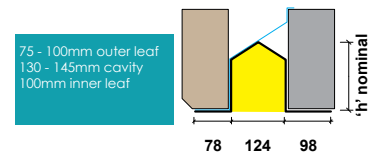
STANDARD LENGTHS (mm) Lintels are available in increments of 150mm	600 1800	1950 3000	3150 3900	4050 4500	4650 4800	4950 5100		
Nominal Height "h" (mm)	236	236	236	236	236	236		
Weights (kg/m)	21.6	21.6	21.6	21.6	21.6	18.1		
SWL 5:1 (kN)	89	71	55	42	37	32		
SWL 19:1 (kN)	75	60	46	40	35	30		
RM (kNm)	21.5	21.5	21.5	20.5	20.5	20.5		

## SL130 SOL



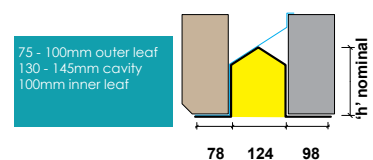
Not suitable to support precast concrete floors, attic trusses, heavy point loads.

## SL130 HD SOL



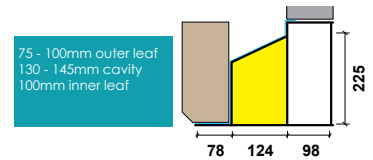
Not suitable to support precast concrete floors, attic trusses, heavy point loads.

## SL130 HDX SOL



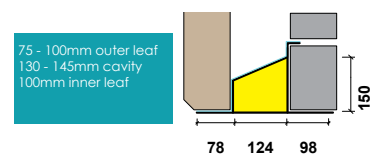
Not suitable to support precast concrete floors, attic trusses, heavy point loads.

## SL130 XHD 225 SOL



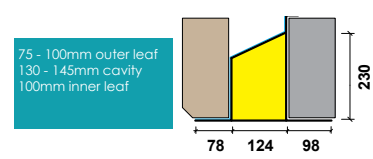
Suitable to support precast concrete floors, attic trusses, and point loads.

## SL130 CXHD 150 SOL



Suitable to support precast concrete floors, attic trusses, and point loads.

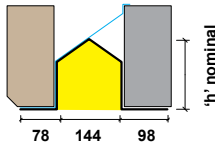
## SL130 CXHD 225 SOL



Suitable to support precast concrete floors, attic trusses, and point loads.

### SL150 SOL

75 - 100mm outer leaf  
150 - 165mm cavity  
100mm inner leaf

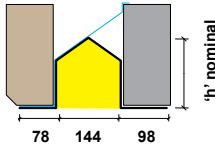


Not suitable to support precast concrete floors, attic trusses, heavy point loads.

STANDARD LENGTHS (mm)	600	1350	1650	1950	2250	2550	3150	3750	4050	4350
Lintels are available in increments of 150mm	1200	1500	1800	2100	2400	3000	3600	3900	4200	4800
Nominal Height "h" (mm)	95	113	134	140	153	190	190	190	225	225
Weights (kg/m)	10.9	11.7	12.7	13.0	13.6	15.1	15.4	15.4	17.1	21.8
SWL 1:1/3:1 (kN)	16	17	22	23	24	28	28	28	28	28
SWL 19:1 (kN)	12	13	17	18	19	22	22	22	22	22
RM (kNm)	3.5	4.5	6.4	7.7	8.8	13.3	13.3	13.3	13.3	13.3

### SL150 HD SOL

75 - 100mm outer leaf  
150 - 165mm cavity  
100mm inner leaf

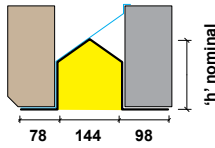


Not suitable to support precast concrete floors, attic trusses, heavy point loads.

STANDARD LENGTHS (mm)	600	1350	1650	2250	2850	3300	3750	4050
Lintels are available in increments of 150mm	1200	1500	2100	2700	3150	3600	3900	4200
Nominal Height "h" (mm)	140	153	190	190	225	225	225	225
Weights (kg/m)	13.0	13.6	15.4	15.4	17.1	17.1	17.1	21.8
SWL 1:1/3:1 (kN)	42	40	41	41	41	35	33	33
SWL 19:1 (kN)	33	31	32	32	32	27	26	26
RM (kNm)	5.6	6.8	10.0	13.3	15.5	15.5	15.5	16.2

### SL150 HDX SOL

75 - 100mm outer leaf  
150 - 165mm cavity  
100mm inner leaf

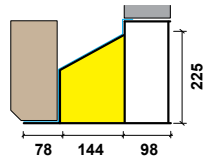


Not suitable to support precast concrete floors, attic trusses, heavy point loads.

STANDARD LENGTHS (mm)	600	1350	1650	1950	2400			
Lintels are available in increments of 150mm	1200	1500	1800	2250	2700			
Nominal Height "h" (mm)	153	185	190	225	225			
Weights (kg/m)	13.6	15.1	15.4	17.1	21.8			
SWL 1:1/3:1 (kN)	51	53	64	59	50			
SWL 19:1 (kN)	40	41	50	46	39			
RM (kNm)	6.8	9.0	13.3	15.5	16.2			

### SL150 XHD 225 SOL

75 - 100mm outer leaf  
150 - 165mm cavity  
100mm inner leaf

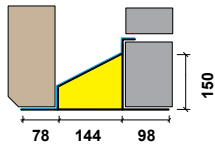


Suitable to support precast concrete floors, attic trusses, and point loads.

STANDARD LENGTHS (mm)	600	2250	2850	3450	4050			
Lintels are available in increments of 150mm	2100	2700	3300	3900	4200			
Nominal Height "h" (mm)	225	225	225	225	225			
Weights (kg/m)	29.6	29.6	29.6	29.6	25.2			
SWL 5:1 (kN)	79	60	49	41	40			
SWL 19:1 (kN)	66	51	41	34	33			
RM (kNm)	20.6	20.6	20.6	20.6	20.6			

### SL150 CXHD 150 SOL

75 - 100mm outer leaf  
150 - 165mm cavity  
100mm inner leaf



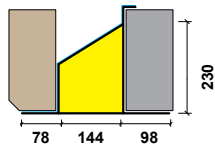
Suitable to support precast concrete floors, attic trusses, and point loads.

STANDARD LENGTHS (mm)	600	1950	2250	2550				
Lintels are available in increments of 150mm	1800	2100	2400	2700				
Nominal Height "h" (mm)	156	156	156	156				
Weights (kg/m)	18.8	18.8	18.8	14.3				
SWL 5:1 (kN)	72	62	53	41				
SWL 19:1 (kN)	61	52	45	34				
RM (kNm)	12.6	12.6	12.6	12.6				

See additional installation requirements on page 26.

### SL150 CXHD 225 SOL

75 - 100mm outer leaf  
150 - 165mm cavity  
100mm inner leaf



Suitable to support precast concrete floors, attic trusses, and point loads.

STANDARD LENGTHS (mm)	600	1950	3150	4050	4650	4950		
Lintels are available in increments of 150mm	1800	3000	3900	4500	4800	5100		
Nominal Height "h" (mm)	236	236	236	236	236	236		
Weights (kg/m)	22.5	22.5	22.5	22.5	22.5	18.1		
SWL 5:1 (kN)	89	71	55	42	37	32		
SWL 19:1 (kN)	75	60	46	40	35	30		
RM (kNm)	21.5	21.5	21.5	20.5	20.5	20.5		

See additional installation requirements on page 26.